

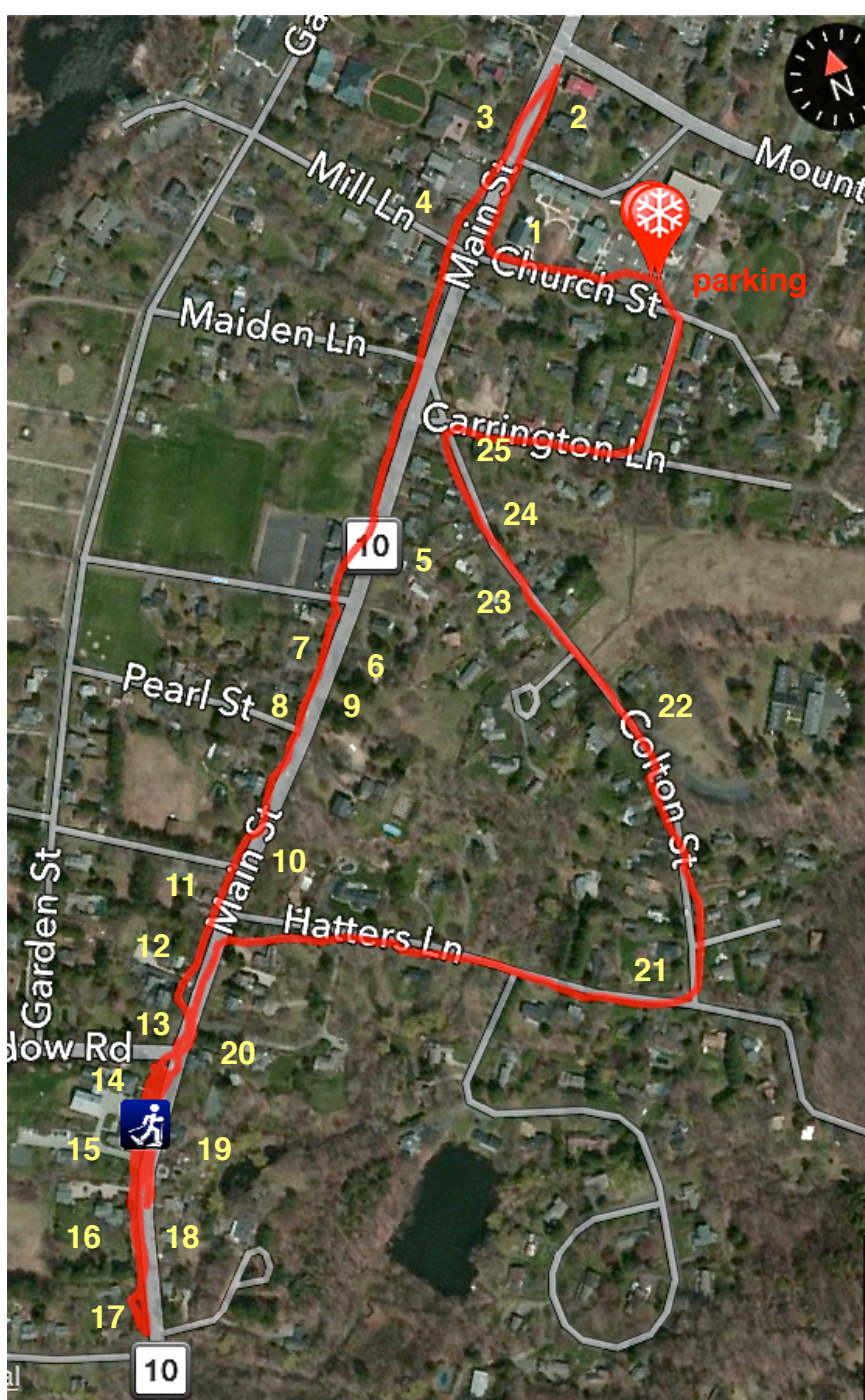
Farmington's Colonial Walk Southern Loop 2.2 miles

Key to Southern Loop

1. 75 Main St First Church of Christ 1771 NRHP CT
2. 59 Main St Jonathan Cowles House 1799 CT
3. 66 Main St Thomas Hart Hooker House 1770 CT
4. 80 Main St Hart-Deming House ca 1730 CT
5. 107 Main St Wadsworth Homestead 1685 CT
6. 117 Main St Dorchester-Porter House 1784 CT
7. 118 Main St Rev. Joseph Washburn House 1796 CT
8. 122 Main St Jude Hamilton House 1802 CT
9. Farmington's First Cemetery 1665
10. Rochambeau Route 1781-82 Historic Marker HMdb
11. 138 Main St Gridley Cottage ca 1787 CT
12. 144 Main St Case, Coral House 1771 CT
13. 148 Main St "Old Gate" ca 1790 CT
14. 154 Main St Lewis Walpole Library 1786 CT
15. 158 Main St Capt. Tim Root House 1760 CT
16. 164 Main St W. Wadsworth Jr. House 1769 CT
17. 174 Main St Wyllis-Orton-Wadsworth House 1656 CT
18. 163 Main St John Smith House 1742 CT
19. 157 Main St The Root Homestead ca 1690 CT
20. 149 Main St Hooker-Cowles House 1713 CT
21. 44 Colton St Stephan Root House 1740 CT
22. 23 Colton St John Cole Jr House ca 1700 CT
23. 12 Colton St Porter Wadsworth Cottage ca 1797 CT
24. 9 Colton St Thomas Lee Jr House 1792 CT
25. 2 Carrington La Cowles-Pitkin House 1686 CT

CT = Connecticut Historical Commission
 NRHP = National Register of historic Places
 HMdb = Historic Marker database

This loop walk which passes by buildings from the 1600's -1700's begins at the parking lot of the Barney Library. Follow the key in numerical order, crossing busy Main Street at the crosswalks. When you reach #17, you will have to retrace your steps to the crosswalk at Meadow Rd. Walk down and back to #18.



Walking south along rt.10 you pass a number of buildings from the 1800's which are identified in the other walk in Town. When you are opposite Carrington Lane look across the street for the Historic Marker that identifies that Farmington was established in 1640 from land originally inhabited by the Tunxis Indians. Farmington was the oldest inland settlement west of the Connecticut River.

All the house names and dates are listed with the Connecticut Historical Commission. Some houses (4, 8, 15, 16, 18, 19, 22, 24, 25) have alternative names and dates posted on the building. The same is true for the First Church of Christ Congregational which is listed on the National Register of Historic Places. This Greek Revival Church was built in 1771, but the First Church of Christ was founded in 1652 and they worshiped in a smaller building called the Meeting House. House numbers are located near the front door, front gate, or driveway. Please respect the homeowners by staying on the sidewalks for any photos. This walk can be followed using your cell phone and enhanced by clicking on the **links listed below**:

Historic Buildings of Farmington, Connecticut http://historicbuildingsct.com/?page_id=2015
 HMdb <http://hdl.handle.net/11134/660002:2684>