

Farmington's Colonial Walk

Northern Loop

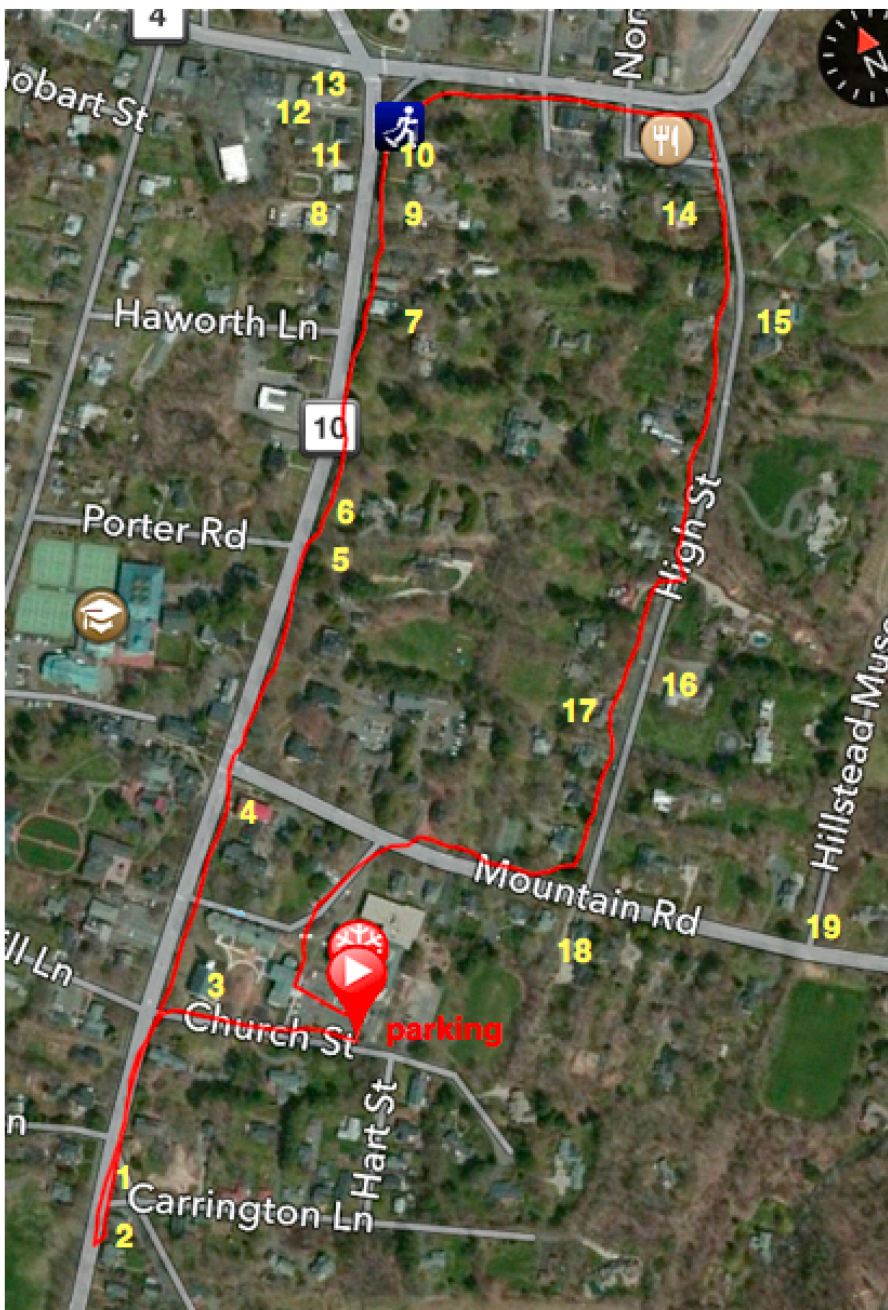
1.5 miles

Key to North Loop

1. Farmington 1640 Historic Marker [HMdb](#)
2. 101 Main St Thomas Buckley House 1788 CT
3. 75 Main St First Church of Christ 1771 NRHP CT
4. 59 Main St Jonathan Cowles House 1799 CT
5. 41 Main St Jesse Porter House c 1785 CT
6. 37 Main St Lewis-Miles House c 1710 CT
7. 27 Main St Samuel Smith House c 1770 CT
8. 24 Main St Roger Hooker House 1688 CT
9. 23 Main St Samuel Steel House c 1655 CT
10. 17 Main St John Thomson House c 1769 CT
11. 16 Main St Street-Winship House c 1769 CT
12. 10 Main St Ezekiel Thompson House c 1770 CT
13. 4 Main St Daniel Curtiss House 1783 CT
14. 4 High St Major Peter Curtis House 1786 CT
15. 13 High St Daniel Judd House c 1725 CT
16. 37 High St Stanley Whitman House 1720 NRHP
17. 40 High St Merrills- Dickerson House 1782 CT
18. 22 Mountain Rd Sgt. Thomas Hart House 1690 CT
19. 35 Mountain Rd a 0.7 mile out & back extension to the Hill-Stead Museum 1901 NRHP CT

CT = Connecticut Historical Commission
NRHP = National Register of Historic Places
[HMdb](#) = Historic Marker Database

This loop walk which passes by buildings from the 1600's -1700's begins at the parking lot for the Barney Library. Follow the key in numerical order. If Mountain Rd. is busy, use the crosswalk on your return, as opposed to taking a short cut.



This walk passes through the Farmington Historic District and by 3 buildings listed on the National Register of Historic Places (NRHP). It also passes by a marker listed on the Historic Marker Database ([HMdb](#)). All houses are registered with the Connecticut Historical Commission (CT). Some houses (2,17,18) have alternative names and dates posted on the building. The same is true for the First Church of Christ Congregational which is listed on the National Register of Historic Places (NRHP). This Greek Revival Church was rebuilt in 1771, but the First Church of Christ was founded in 1652 when they worshiped in a smaller building called the Meeting House. #9 is the oldest house in Farmington. House numbers are located near the front door, front gate, or driveway. Please respect the homeowners by staying on the sidewalks for any photos. This walk can be followed using your cell phone and enhanced by clicking on the **links listed below**:

Historic Buildings of Farmington, Connecticut http://historicbuildingsct.com/?page_id=2015

HMdb <http://hdl.handle.net/11134/660002:2684>

Farmington Historic District <http://www.farmington-ct.org/home/showdocument?id=2595>