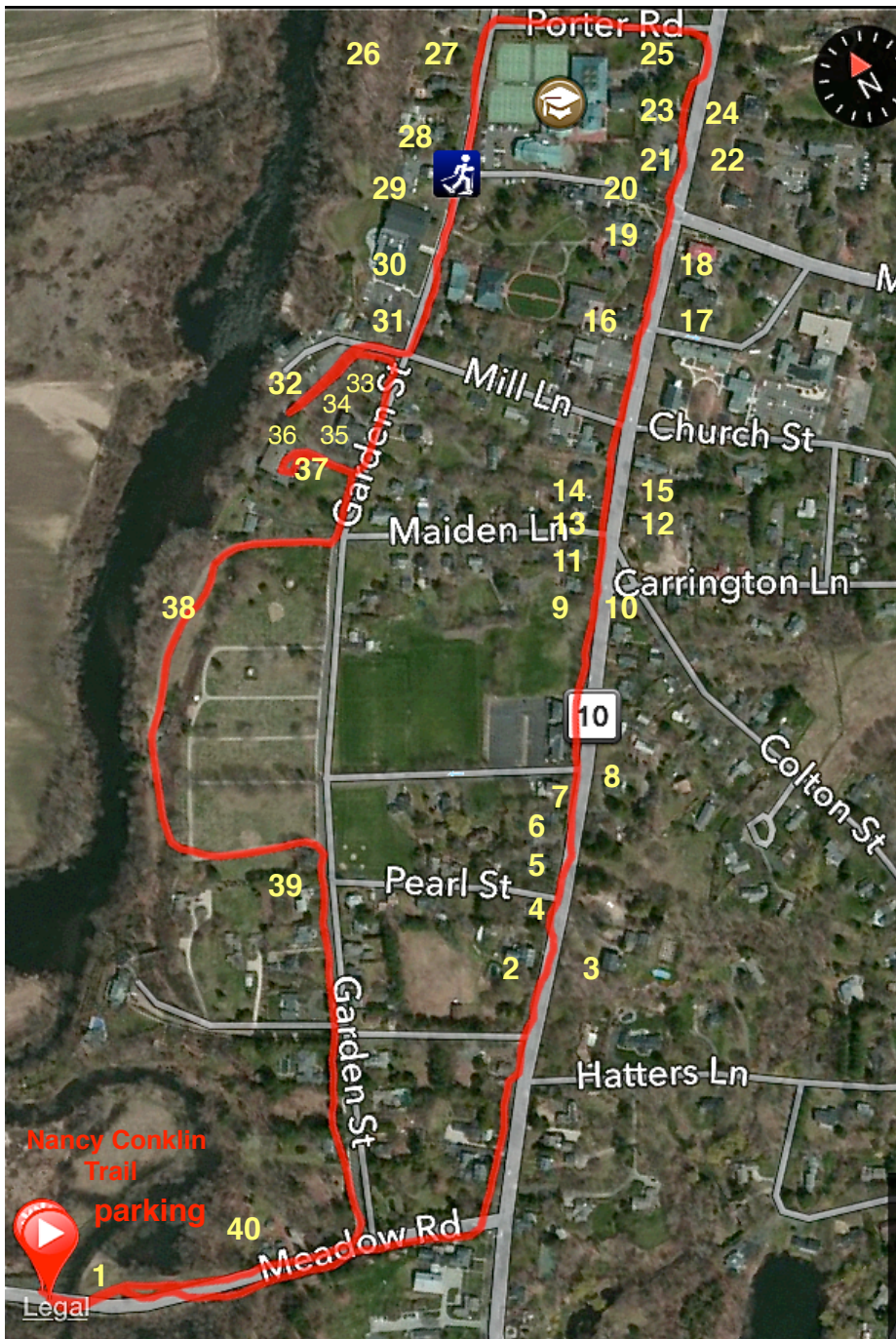


## A Walk through 19th Century Farmington 2.4 miles

### Key

1. Pequabuck Bridge 1833 NRHP
  2. 130 Main St Gen. G. Cowles House 1803 NRHP
  3. 127 Main St A. F. Williams House ca 1850 NRHP CT
  4. 126 Main David R Hawley House 1895 CT
  5. 122 Main St Jude Hamilton House 1802 CT
  6. 116 Main St Rev. Noah Porter House ca 1808 CT
  7. American Board Marker 1810 HMdb
  8. 113 Main St Frederick Scott House 1894 CT
  9. 100 Main St Edward Deming House 1887 CT
  10. 99 Main St Asa Andrews Tin shop 1803 CT
  11. 96 Main St Parsonage 1875 CT
  12. 93 Main St Asa Andrews House ca 1805 CT
  13. 92 Main St Treadwell Thompson House 1867 CT
  14. 90 Main St Cowels- Thompson House 1867 CT
  15. 87 Main St Major Timothy Cowles House 1815 CT
  16. Freedom Trail Marker HMdb
  17. 65 Main St Gad Cowles House ca 1800 CT
  18. 63 Main St Gad Cowles House ca 1800 CT
  19. 60 Main St Union Hotel 1830 CT
  20. 56 Main St Augustus Ward House ca 1842 CT
  21. 54 Main St Elijah & Gad Cowles Store 1813 CT
  22. 49 Main St Charles Thompson House 1841 CT
  23. 48 Main St Francis Cowles House 1844 CT
  24. 47 Main St John Cowles House 1844 CT
  25. 44 Main St Erastus Gay House 1855 CT
  26. 54 Garden St F. Fuller Hurlbert House 1878 CT
  27. 60 Garden St Horace B Holt House 1850 CT
  28. 68 Garden St Bridget Shanley House 1893 CT
  29. 72 Garden St James W Halsted House 1880 CT
  30. 78 Garden St Ward House 1845 CT
  31. 104 Garden St Hurlburt-White House 1877 CT
  32. 44 Mill Lane Thomas Hart Gristmill 1690 CT
  33. 108 Garden St Music Cottage 1865 CT
  34. 114 Garden St Williams Cottage 1866 CT
  35. 118 Garden St Porter-Williams House 1866 CT
  36. 120 Garden St Phoenix Hotel. 1848 CT
  37. 128 Garden St Pitkin Basin 1828 HMdb
  38. Farmington Canal 1828-1847 NRHP
  39. 170 Garden St George H Root House 1850 CT
  40. Farmington Canal 1828-1847 NRHP
- CT = Connecticut Historical Commission  
NRHP = National Register of Historic Places  
HMdb = Historic Marker Database



Alan M. Perrie 6 / 12 / 2023

Park at the Nancy Conklin Trailhead. Walk east on the bike path crossing the Pequabuck Bridge (1) which is listed on the National Register of Historic Places (NRHP). General George Cowles House (2) is also on it because this was where the Farmington Canal Company was formed in 1822. Walk north along rt.10 noting the names and dates of houses found on the key that are listed on the Connecticut Historical Commission (CT). Also note the several Historic Markers along the route. This historic walk through the 19th Century has a short diversion to the Thomas Hart Gristmill (1690). There is another short diversion into Pitkin Basin (HMdb) which was like a harbor for the Farmington Canal (1828-1847). Turn into the North Gate of Riverside Cemetery to trace a portion of the path of the Farmington Canal. On your return, you cross the Farmington Canal again (40) just past the house at 20 Meadow Rd. Please respect the homeowners by staying on the sidewalks for any photos. (note the Google map of the Canal route)

This walk can be followed using your cell phone and enhanced by clicking on the links listed below:

Historic Buildings of Farmington, Connecticut [http://historicbuildingsct.com/?page\\_id=2015](http://historicbuildingsct.com/?page_id=2015)  
HMdb. <http://hdl.handle.net/11134/660002:2686>

