

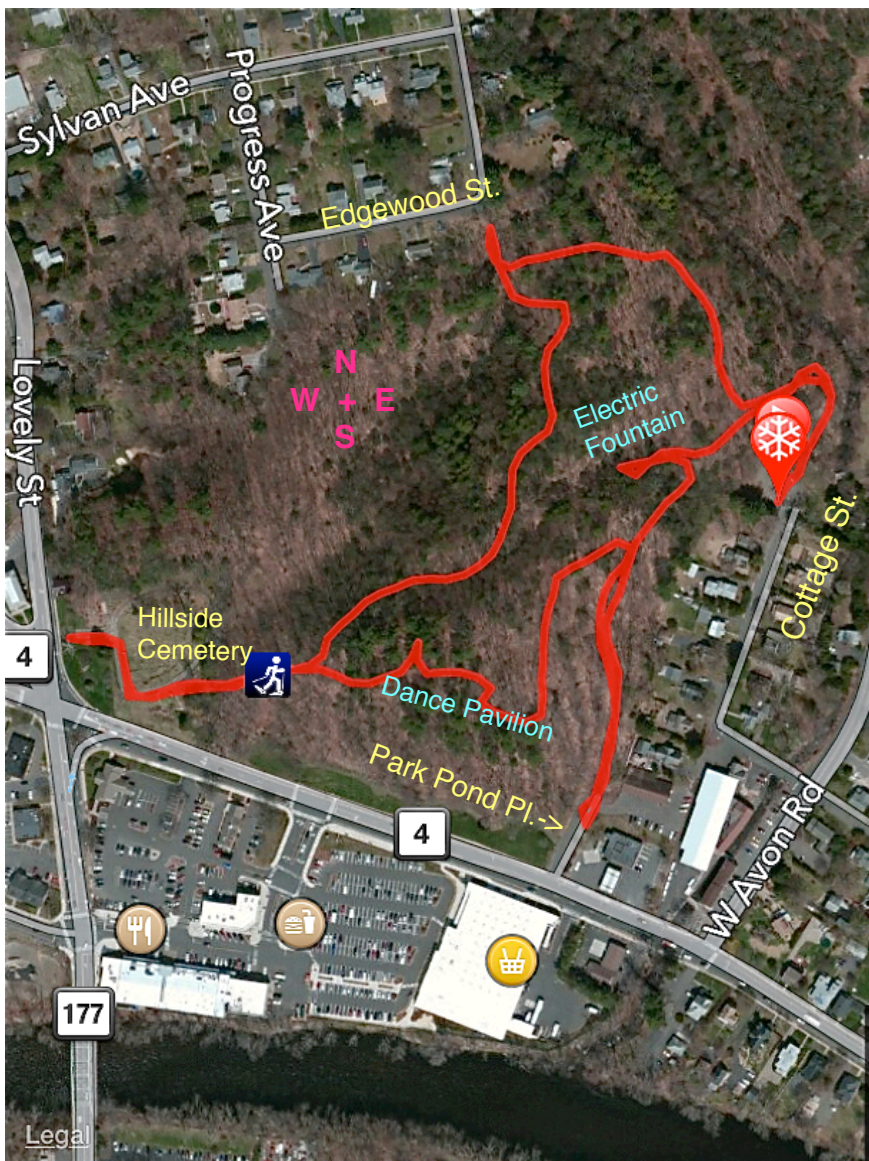
## Historic hike through Suburban Park

Suburban Park forms a large part of Unionville's Historic District. The 20.5 acres were purchased by the Town of Farmington in 2001. There are two periods of history represented here: one glacial, the other recreational. The 1.3 mile loop trail found on the map has a remarkable number of ups and downs caused by the last glacier, when it receded 12,000 years ago. As the climate warmed big blocks of ice calved off the glacier and became buried in the glacial till washed down from the melting glacier. When the ice blocks melted, they formed round depressions, known as kettle holes. There are 5 well formed kettle holes here in the park. Can you find all 5?

Unionville was the industrial section of Farmington and produced electricity by the end of the 1800's. By 1894, the trolley was extended to Unionville. Suburban Park was created, becoming a recreation destination for visitors from Farmington, West Hartford, and Hartford. It was active between 1895-1905. Attractions included a large electrified fountain, dance pavilion, ice cream parlor, and a pond with small boats. A number of the foundations are located along the trails. The electrified fountain is a highlight because it is also in one of the largest kettle holes. The foundation of the dance pavilion is another highlight, especially late Fall to early Spring, when views of Unionville below are clear.

There are 4 trailheads to the Park found on the map. The north entrance is off Edgewood Street. The west has parking at M&T Bank. Cross over to the Hillside Cemetery and keep parallel to route 4. The south has very limited parking on Park Pond Place, but it does have the classic sign. East has the best parking at the end of Cottage Street. ( 41.759037 -72.881627 ) From this cul-de-sac walk north to find the trailhead as you approach Roaring Brook. Turn left uphill after entering the woodlands. The trails are not blazed, but they will all connect with the main park loop. If you imagine this loop as a clock-face, 3:00 brings you to the kettle hole with ruins of the electrified fountain. 5:00 is the long spur ending with the sign for Suburban Park. 6:00 is the foundation of the pavilion, with its good views over Unionville during winter. 7:00 is the trail to the Cemetery. There are many unmarked cross trails, so you might get lost, but the Park is small and easy to get found again. Guided tours are available through the Unionville Museum.

An excellent historical resource & detailed map: <http://www.farmington-ct.org/home/showdocument?id=2619>



Suburban Park satellite map



ruins of the electrified fountain



sign at Park Pond Place

### 4 Historic markers in Unionville:

- <http://hdl.handle.net/11134/660002:2687>
- <http://hdl.handle.net/11134/660002:2690>
- <http://hdl.handle.net/11134/660002:2692>
- <http://hdl.handle.net/11134/660002:2241>

Alan M Perrie.  
10 / 12 / 22