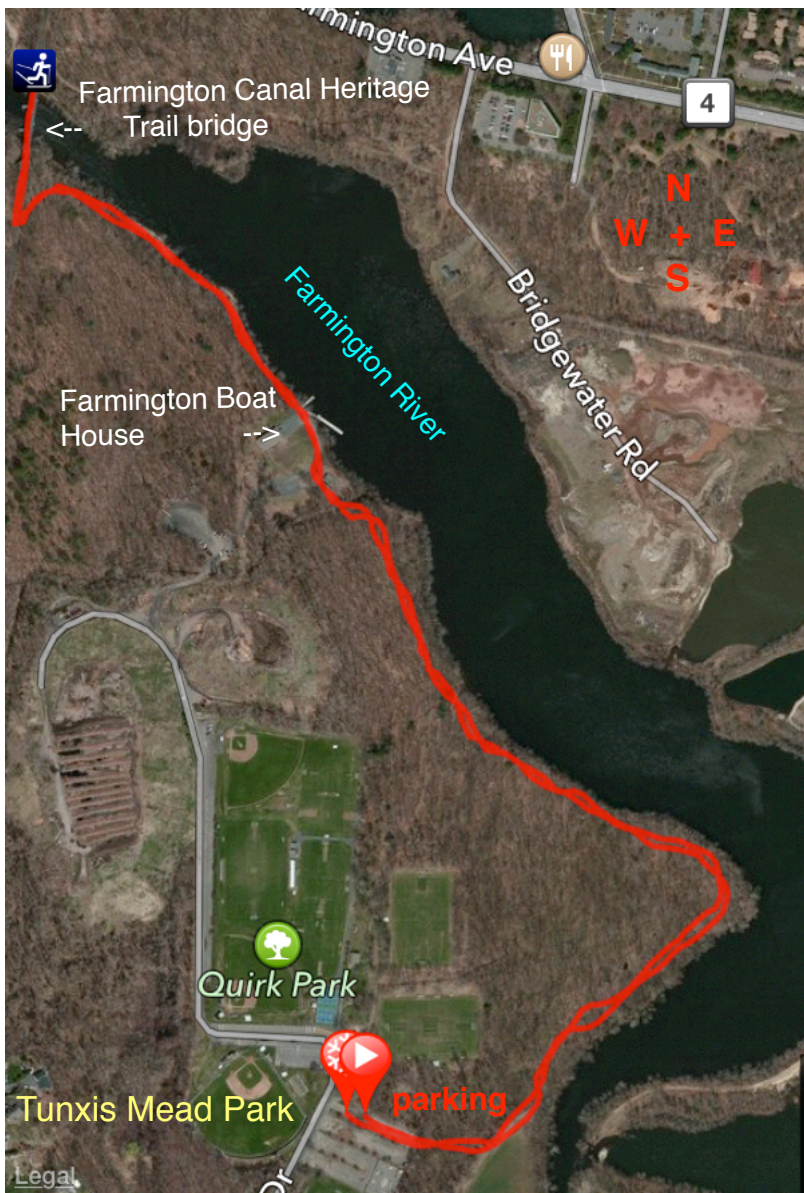


## Farmington Heritage Bridge Trail 2.6 mile out & back



The best view to reflect on Farmington's 12,000 year history. Note the Steeple for the First Church of Christ in center with the Metacomet Ridge behind it. The Farmington Canal is just west of it and the railroad would be under your feet, as would the glacial lake.

This hike follows the Farmington River upstream to the Farmington Canal Heritage Trail and across the bridge with a view of Farmington's heritage. The Colonial Era is easiest to spot because of the tall white steeple of the First Church of Christ located in Farmington's Historic District. The church was founded in 1652 and is listed on the National Register of Historic Places. This section of the trail was named after the Canal Era (1828-1847) which had a major effect on Farmington's history. The Unionville Feeder Canal crossed this trail 0.3 miles to the north. The Railroad Era in Farmington (circa 1850-1980) replaced canal transportation, and this bridge was built for the railroad. Today this bridge is one of the highlights on the East Coast Greenway. Its use for outdoor recreation has become the new era of today. The era that had the biggest effect on Farmington was the post glacial period of 12,000 years ago. If this bridge existed back then, a glacial lake would be just below your feet and extend to the First Church of Christ. Check out the Farmington Flats Loop Trail for some information on our Glacial Era.

Park at the northwest corner of the first parking lot on the right in Tunxis Mead Park ( 41.729261 -72.854519 ). The well used trailhead is east from this corner and quickly reaches the fields of the Farmington Flats. Turn left to follow this trail toward the river. This wide trail with white blazes has some of the best views per mile since it follows the river upstream. Be sure to keep the river in view since there are other trails that come in from Tunxis Mead. This hike is cool in the summer due to shade from the mature forest and the cooling effect from the river. It is perfect for hiking, running, and dog walking. At 0.9 miles continue past the Farmington Boat House, and at 1.3 miles you will have crossed over the river. Take some time on the bridge to reflect on the 5 eras from our past. If you hear the sorter from Dunning Sand & Gravel, think Glacial Era.

Information link to the Farmington Canal: <http://hdl.handle.net/11134/660002:2689>

Information link to the Unionville Feeder Canal <http://hdl.handle.net/11134/660002:2683>

Information link to Farmington's Historic Dams. <http://hdl.handle.net/11134/660002:4551>