

# TOWN OF FARMINGTON HARTFORD COUNTY, CONNECTICUT WALKING TRAILS MAP



**LEGEND**

- Town Line
- Roadway
- Waterway
- Waterbody

**Existing Open Space**

- Town Owned Open Space
- Farmington Land Trust
- State DEP Owned Open Space
- Private Protected Open Space
- Privately Owned Public Golf Course
- MDC Property
- School
- Landmark

**TRAIL & PARKING LEGEND**

**WALKING TRAILS**

**TRAIL NUMBER & NAME**

- 1, SUBURBAN PARK
- 2, McMANAMA TRAIL
- 3, FISHING PIER HIC ACCESSIBLE
- 4, FARMINGTON MEMORIAL FOREST
- 5, WHITE TRAIL
- 6, BLUE TRAIL
- 7, TUNXIS MEAD
- 8, NANCY CONKLIN TRAIL
- 9, NEW ENGLAND NATIONAL SCENIC TRAIL(METACOMET)
- 10, FARMINGTON RESERVOIR TRAIL
- 11, HILL-STEAD MUSEUM TRAILS
- 12, TALCOTT RIDGE
- 13, CANAL AQUEDUCT-HENRY MASON
- 14, WINDING TRAILS
- 15, FISHING PIER HIC ACCESSIBLE
- 16, SADDLE RIDGE PATHS

- NEW ENGLAND NATIONAL SCENIC TRAIL (NENST)
- PATHS
- OTHER RIVER SIDE TRAILS

**MULTI-USE TRAIL**

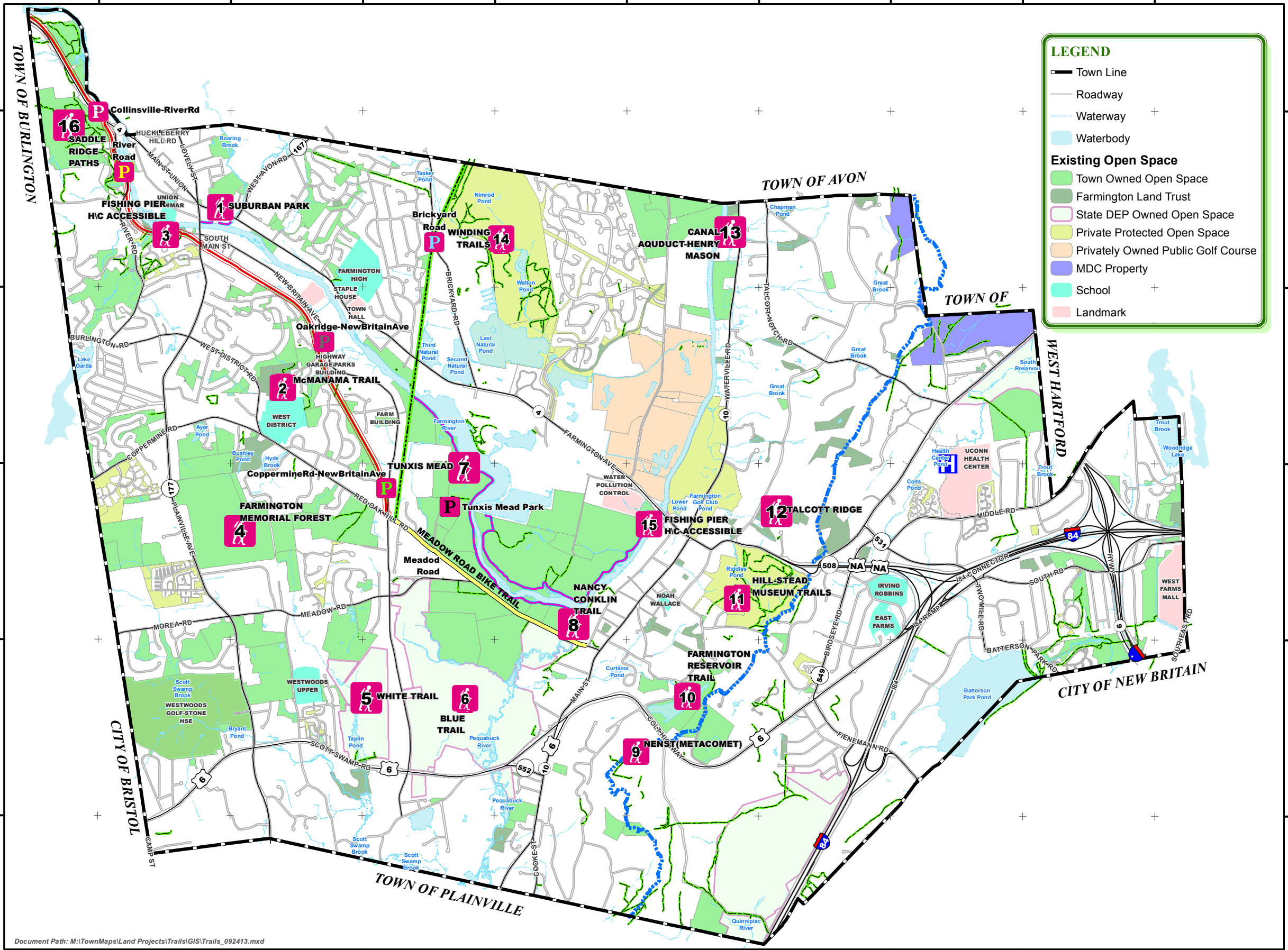
**TRAIL NAME**

- FARMINGTON CANAL HERITAGE TRAIL
- FARMINGTON RIVER TRAIL
- MEADOW ROAD BIKE TRAIL

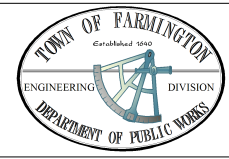
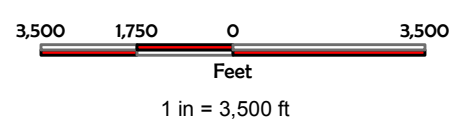
**TRAIL PARKING**

**LOCATION**

- Collinsville Road/River Road
- River Road
- Coppermine Road/New Britain Ave
- Oakridge/New Britain Ave
- Brickyard Road
- Tunxis Mead Park



Document Path: M:\TownMaps\Land Projects\Trails\GIS\Trails\_092413.mxd



SHEET NO. 1/1  
**WALKING TRAILS  
MAP**  
DATE PRINTED 3/20/2015