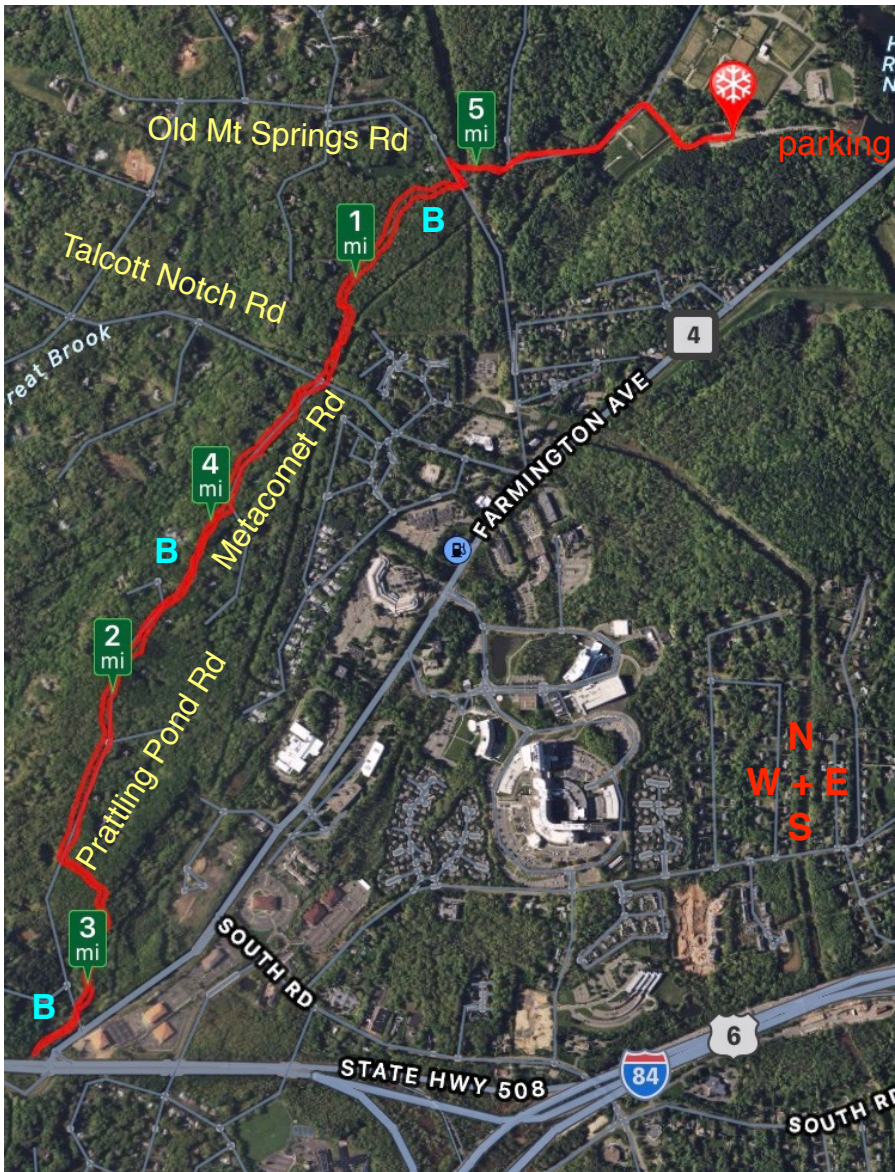


NET North part A
5.4 miles
670 feet vertical



A potential shocking experience.



The New England Trail (NET) North part is an out and back hike that begins at the MDC parking lot in West Hartford at 41.747678 -72.785985. Hike west between the gate and yellow posts on a wide MDC paved service road which turns northeast in 50 yards. Turn left at the "T" junction onto the paved MDC Red Trail which is also used by cyclists. At 0.4 miles the paved Red Trail turns 90° to the right and a gravel road is 90° to the left. Between them is a gravel trail that goes straight in a northwest direction. Follow this trail under some power lines. You will soon see the MDC fence next to Old Mountain Road. At 0.6 miles you will reach the MDC gate for the New England Trail marked with blue blazes. Open and close the gate to pick up the Blue Trail across the road where the New England Trail sign is located (above photo). You will also see signs that remind you to stay on the trail since private property is very close. You will discover one home owner that made sure hikers follow the rules (photo). Cross Talcott Notch Road at 1.2 miles and follow the NET blue markers next to Metacomet Road. At 1.4 miles the NET turns 90° to the right entering the forest. At 1.5 miles it merges onto Prattling Pond Road and then turns diagonally left into the woods next to the road for a short distance before returning to Prattling Pond Road. At 1.7 miles turn 90° to the left into the forest. At 2.5 miles you will turn 90° to the left and then right on Prattling Pond Road to reach route 4 at 2.7 miles. Turn around and retrace your steps back to your car. On December 2nd, this trail was well maintained and well used so it is easy to follow and the blue painted blazes are almost not needed.

link for the Blue Trails Interactive Map: <http://www.ctwoodlands.org/blue-blazed-hiking-trails>

link for the Metacomet Ridge: https://en.wikipedia.org/wiki/Metacomet_Ridge