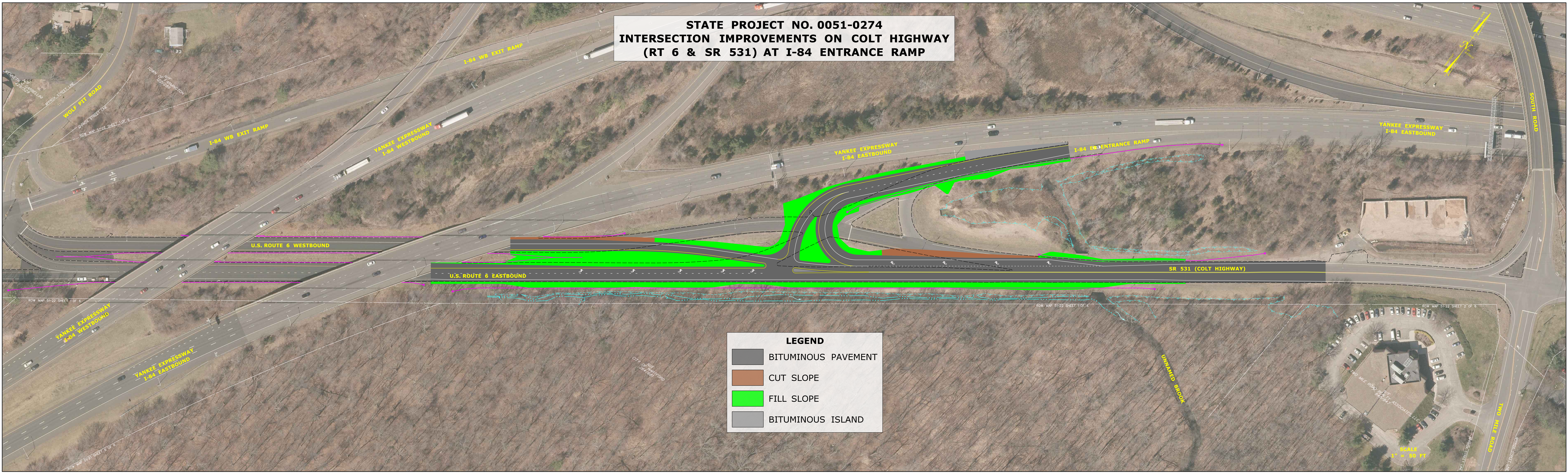


**STATE PROJECT NO. 0051-0274  
 INTERSECTION IMPROVEMENTS ON COLT HIGHWAY  
 (RT 6 & SR 531) AT I-84 ENTRANCE RAMP**



**LEGEND**

- BITUMINOUS PAVEMENT
- CUT SLOPE
- FILL SLOPE
- BITUMINOUS ISLAND

SCALE  
 1" = 80 FT