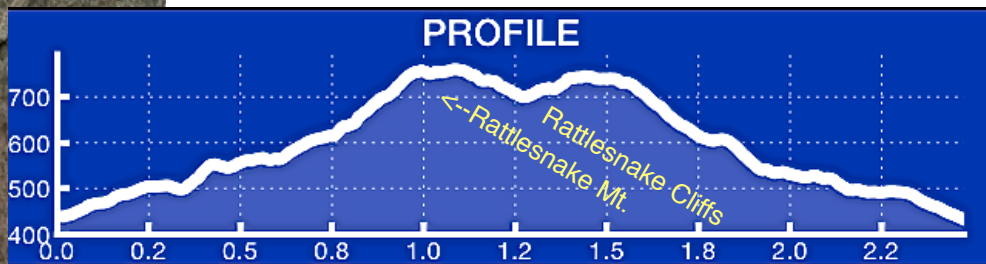
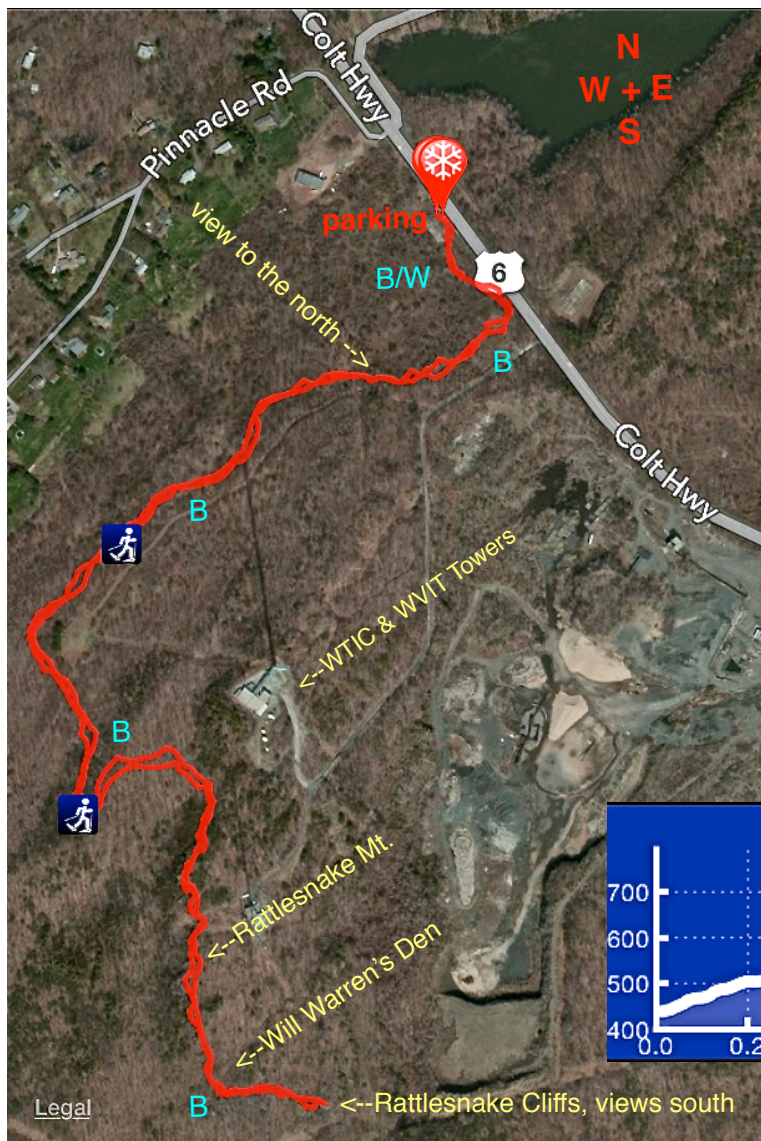


## New England Trail

### Farmington's Metacomet south section 2.6 miles



Rattlesnake Cliffs southern view of the Metacomet Ridge



The New England Trail (NET) is one of 11 National Scenic Trails in the USA. The 233 mile trail connects Long Island Sound in Guilford, CT to Mt. Monadnock in New Hampshire. It crosses Farmington from south to north on the Metacomet Trail. The southern section takes you over Rattlesnake Mt. (highest point in Farmington at 750'), by the historic landmark of Will Warren's Den, and to the Rattlesnake Cliffs with the great 180° view south to Hartford, Sleeping Giant State Park, and the Hanging Hills of Meriden.

Parking is off rt. 6 at 41° 42' 31.19" N 72° 49' 45.46" W. Ascend on the blue and white blazed trail (B/W) to the junction with the blue blazed Metacomet Trail (B) at 0.1 mile. Turn right ascending to 0.2 miles where there is a small clearing on your right with a great view to the north. Continue upward going around the 2 tall TV towers to reach Rattlesnake Mountain at 1.1 mile. The actual high point is to your right, but the forest blocks any good view points. Descend another 0.1 mile to the sharp left turn in front of Will Warren's Den (check the link below for its history and a look inside). The trail now turns east to the great views from the Rattlesnake Cliffs at 1.3 miles. Return to your car completing 2.6 miles and 850 feet vertical.

There are 2 optional extensions from the Cliffs: Pinnacle Rock is Plainville's second highest summit at 600' and can be reached by adding another 1.0 miles. A former Nike Missile Base that defended Hartford during the Cold War is an additional 0.3 miles south. By adding these extensions, you would have hiked 5.2 miles and over 1,700 vertical feet.

Additional resources: NET [https://en.wikipedia.org/wiki/New\\_England\\_National\\_Scenic\\_Trail](https://en.wikipedia.org/wiki/New_England_National_Scenic_Trail)

Will Warrens Den Historic Marker : <http://www.hmdb.org/marker.asp?marker=92260>

Rattlesnake Mt: [https://en.wikipedia.org/wiki/Rattlesnake\\_Mountain\\_%28Connecticut%29](https://en.wikipedia.org/wiki/Rattlesnake_Mountain_%28Connecticut%29)

Nike Missile Base in Plainville: <https://www.youtube.com/watch?v=WwM-ZoWnh3k>