

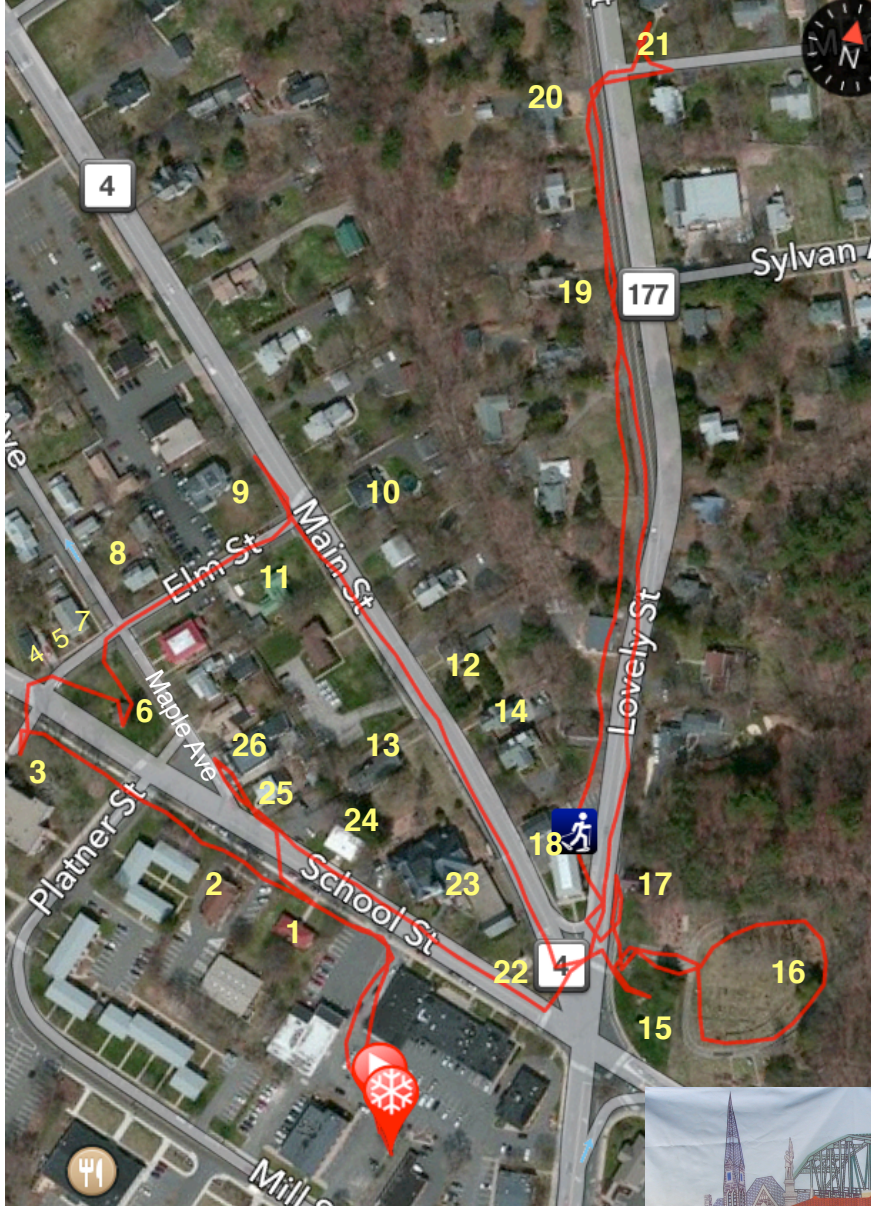
A walk through Unionville's Historic Center

1.6 miles

Key

1. 15 School St 1917 West End Library NRHP UHD
2. 23 School St Second Methodist Church 1926 UHD
3. 173 School St Union School 1939
4. corner of Elm & School St, Canal for Platner & Porter Paper Mill
5. 28 Elm St Platner & Porter Boarding House 1854 UHD CT
6. Clover- Pinney Park 1880's UHD
7. 34 Elm St Platner & Porter rental house 1860 CT
8. 20 Elm St Dr. William Sage House 1852 CT
9. 101 Main St Samuel Frisbie House 1863 CT
10. 90 Main St Edward M. Mills House 1861 CT
11. 87 Main St Platner & Porter rental house 1849 CT
12. 70 Main St Virgil Goodwin House 1842 CT
13. 63 Main St Samuel Porter House 1853 CT
14. 60 Main St Howard W. Humphrey House 1887 UHD CT
15. War Veterans monument HMdb UHD
15. Former site of Christ Episcopal Church 1845 UHD
16. Hillside Cemetery 1850 UHD
17. 8 Lovely St Tunxis Hose NRHP 1893 NRHP UHD
18. 22 Main St Masonic Building 1850 CT
19. 71 Lovely St Frank Sanford House 1884 UHD CT
20. 99 Lovely St Daniel Johnson House 1849 UHD CT
21. 112 Lovely St George Dunham House 1868 CT
22. Civil War Monument HMdb
23. First Church of Christ Congregational 1886 CT
24. 10 School St Unionville Bank & Trust 1929 CT UHD
25. 2 Maple Ave Platner & Porter rental house 1849 CT
26. 6-8 Maple Ave Platner & Porter rental house 1882 CT

NRHP = National Register of Historic Places
 CT = Connecticut Historic Property
 UHD = Unionville Historic District
 HMdb = historic Marker Database



Which of these 5 structures are listed as CT or National Historic Places ?

Park next to the Post Office. Walk to the original West End Library (1) which is listed on the National Register of Historic Places (NRHP) and is in the Unionville Historic District (UHD). When you cross over School St to Elm St. look for the canal head-race (4) that powered the Platner and Porter Paper Mill (1848-1880). This mill was replaced in 1939 by Union School as a WPA project during the Great Depression. 34 Elm St. is listed as a Connecticut Historic Property (CT). Use the cross walk to safely reach The War Veterans Monument (15) and Hillside Cemetery (18). There is a short out and back walk to 112 Lovely St to experience more local homes of the 1800's. Use the crosswalk again to see the last 4 structures. House numbers can be found near the front door, front gate, or driveway. Note the above photo of the banner for Unionville. You have just passed 4 of the 5 historic structures. Please respect the landowners by staying on the sidewalks for any photos. This walk can be followed using your cell phone and enhanced by clicking on the **links listed below**:

CT. <http://historicbuildingsct.com/towns/farmington/>

UHD along Main St. <http://www.farmington-ct.org/home/showdocument?id=2615>

UHD in the Heart: <http://www.farmington-ct.org/home/showdocument?id=2613>

UHD Pinney Park Neighborhood: <http://www.farmington-ct.org/home/showdocument?id=2617>

HMdb <http://hdl.handle.net/11134/660002:2241>